

April 2018

Education Session

That Pesky *Proteus*

Join us for an outbreak investigation story. A facilities surveillance journey: how they identified and solved the mystery, and what changes they made to eliminate the presence of that pesky *Proteus*.

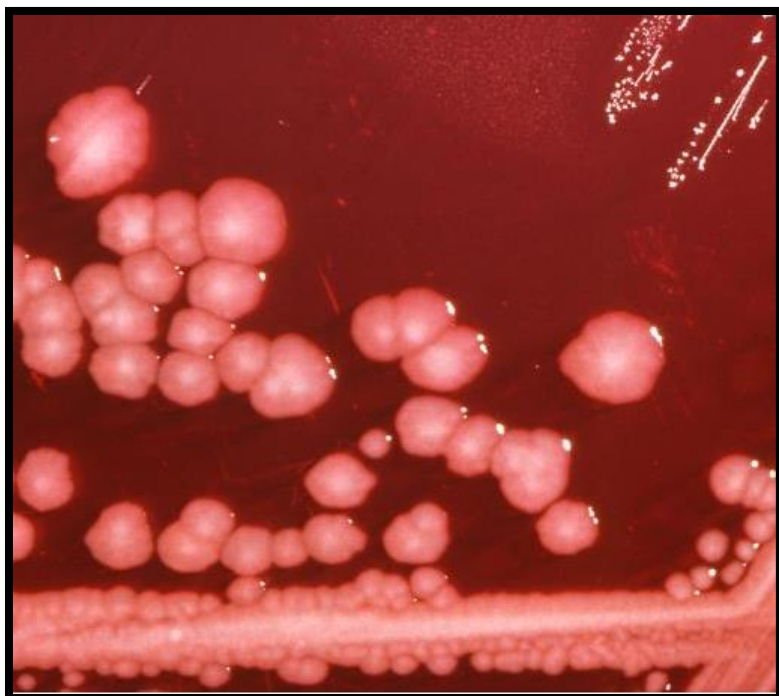
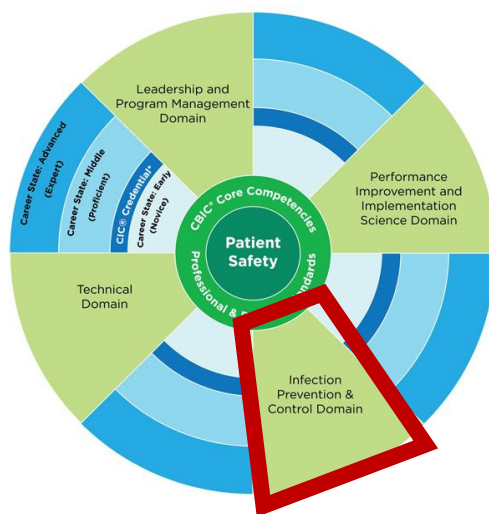


Photo courtesy of CDC

APIC Competency Model for the Infection Preventionist



Presented by: Connie Sue Clum, MSN, RN, Boundary Community Hospital

Target Audience: Any Infection Preventionist interested in professional development.

When: Friday, April 27, 2018: 1-2 pm MT

Where: St. Luke's Meridian Conference Room (Shoshone room – *subject to change*) or via Skype.

RSVP: Kathy Pierce: piercek@slhs.org 208-385-3384

To join the meeting via skype: use the link on the calendar appointment or go to Intermountain APIC's website for a link to join the meeting.

<https://www.apicintermountain123.com/agendas-and-minutes.html>